

THE DETAIL GIVEN BELOW OFFERS A GUIDE IN PRINCIPLE ONLY AND SHOULD BE CHECKED WITH THE MANUFACTURERS OF THE RELEVANT COMPONENT FOR ACCURACY BEFORE INSTALLATION

6/8mm Thick Rockpanel  
Rockclad Durable.

EPDM Gasket.

Vertically fixed timber  
batten. Minimum  
thickness of 28mm

Breathable membrane.

Insulation board.

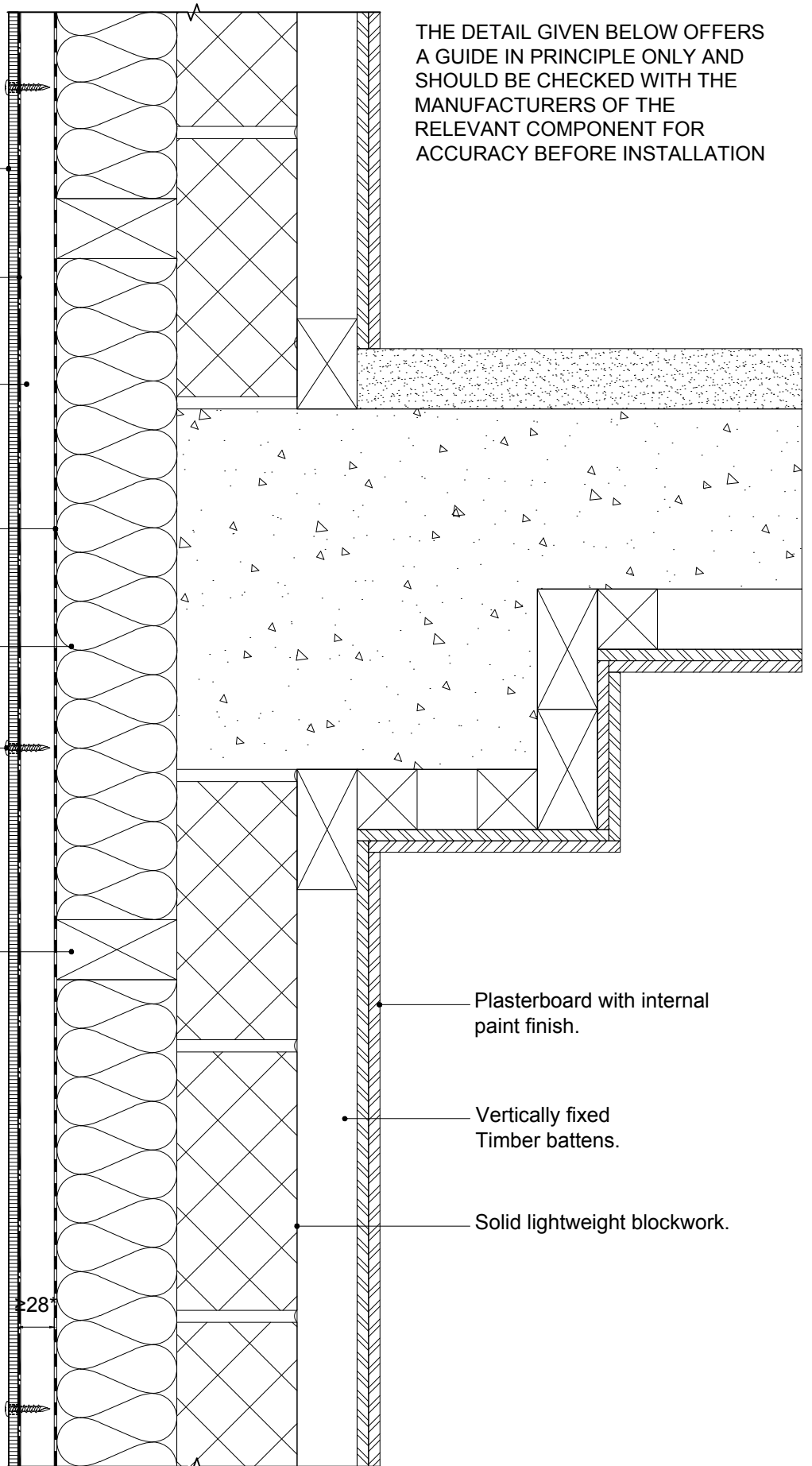
Panels fixed with Torx  
headed screws in  
accordance with  
Rockpanel specification.

Horizontally laid  
timber batten.

Plasterboard with internal  
paint finish.

Vertically fixed  
Timber battens.

Solid lightweight blockwork.



\* FOR ROCKPANEL SYSTEMS  
REQUIRING NHBC APPROVAL  
A CAVITY DEPTH OF 35mm IS  
REQUIRED.

**DETAIL 4 - ROCKCLAD DURABLE  
VERTICAL SECTION TIMBER  
SUBSTRUCTURE TO STRUCTURAL  
CONCRETE & LIGHTWEIGHT BLOCKWORK.**

