

# INSPIRATIONAL RATIONAL CONCRETE

Learning Environments

# INSPI RATIONAL ONAL

## Learning Environments

We learn all through life. From pre-school to primary and secondary education and from universities to sports facilities. Beautiful learning environments make learning easier, safer and – not in the least – more fun!

Rockpanel's extensive product range is your toolbox to create attractive spaces for learning. Whether it's about new-build, renovation, on-site, modular or even temporary school buildings: there's always a perfect solution.

### **Design without limitations**

Learning environments are demanding environments when it comes to functionality. They need to be durable, firesafe, sustainable and robust. Rockpanel cladding offers just all of that, so you can design without limitations in colours, design and fixing options.

Discover the possibilities of Rockpanel and get inspired!



# Everything you need to create unique and amazing facades!

## **Get inspired by nature**

Nature is a great source of inspiration. With Rockpanel Woods, Stones and Natural, you can get the expression of real wood or stone, but without the disadvantages. Our boards are light-weight and as durable and low-maintenance as stone, but as easy to work with as wood.

And if you really want to let nature play an active role in your facade, you can or use our untreated board Natural that patinates to a dark brown colour.

## **Work with colours and shapes**

Create playful, inspiring facades with different shapes and colours. Emphasize the form of the building to make it stand out from the crowd – or let it blend into the environment.

## **Combine with other materials**

By combining different materials, buildings can become even more visually interesting. Use different materials next to each other or create depth in the facade, for example by combining Rockpanel Colours boards with aluminium mesh or baguettes in front of them.

## **Industrial look or sparkling effect**


Attract attention or add a sophisticated look with a colour changing Rockpanel Chameleon facade or a cool industrial look with Rockpanel Metals.

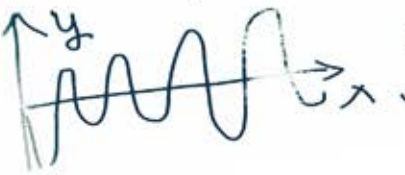
## **Tell a story directly on the facade**

As Rockpanel boards are not affected by moisture, routing or perforating the boards is possible – without any extra treatment afterwards. This will allow you to easily and efficiently tell a story or communicate a message directly on the facade.

## **Prefab modular buildings**

More and more schools are created as prefabricated modules. Rockpanel fits in perfectly! Even when it's just a temporary solution, there's no need to compromise on the facade design.

$\lim_{x \rightarrow a} g(x) \neq g(a)$   
  
 $\cos 1 = \frac{1}{2}$   
 $2\pi + \alpha$   
 $P(A|B) = \frac{P(A \cap B)}{P(B)}$

$p(\omega)$   
 $\sqrt{2} \sin 2x$   
 $ax^2 + bx + c$   
 $\lim_{x \rightarrow a} \frac{ax^2 + bx + c}{x^2 - a^2}$   
 $a^3 + b^3 = (a+b)(a^2 - ab + b^2)$   
 $(a+b)^2 = a^2 + 2ab + b^2$   




# Rockpanel: a unique material that combines design freedom and functionality

Aesthetic environments have a positive influence on the learning environment on many levels. They improve the social environment in schools and enhance creativity.

Not only indoors, but outdoors too. Rockpanel offers unlimited design freedom to create the most beautiful and inspiring learning environments. You can focus on the design, as all the technical and functional requirements are already naturally built-in in the facade boards.

## ■ FIRE SAFE

Fire safety is vital in school environments. Everyone deserves a safe place to learn and play! Rockpanel offers Euroclass A2 cladding, which exceeds the guidance in Building Bulletin 100: Design for fire safety in schools.

## ■ LOW MAINTENANCE

The boards require only a minimum of maintenance, which helps keeping cleaning and maintenance costs low.

## ■ EASY TO INSTALL

Rockpanel boards are light-weight, which makes them easy to install. As pre-drilling the boards is not necessary and the edges don't require any treatment, the installation is done in no time.

## ■ DURABLE

Rockpanel facade boards remain robust and attractive for many decades. They have an officially confirmed lifetime of 50 years.

## ■ IMPACT RESISTANT

Rockpanel products are resistant to even the toughest weather conditions. Rain, wind, changes in temperature, sunlight: the boards can handle everything. Due to the orientation of the stone wool fibres, Rockpanel boards are able to bend and flex. The coatings are durable and can be enhanced further with the additional protect plus layer.

## ■ SUSTAINABLE

Rockpanel exterior cladding is made from basalt, a non-depletable volcanic rock, and recycled materials.

## ■ EASY TO CLEAN

Keeping Rockpanel boards clean couldn't be easier: most of the atmospheric dirt is simply washed away by rain water. An extra ProtectPlus layer offers increased self-cleaning capacity and also has anti-graffiti properties.

## ■ RESISTANT TO HUMIDITY

The boards are insensitive to moisture and therefore do not require edge treatment. That means they can be installed directly after cutting!

Enjoy the inspiration on the following pages ...

# GET INSPIRED BY NATURE

Add a touch of nature to your facade with our Woods, Stones or Natural designs. For fire safe, robust and durable facades that combine the benefits from stone with the flexibility of wood.

# TREEHOUSE SCHOOL

## The Netherlands

■  
What captures the imagination more than a tree house? A walk in the park gave the architects the idea to create this school building. This community school has inspired many ever since – from students and teachers to architects all over Europe.

(Product: Rockpanel Woods)

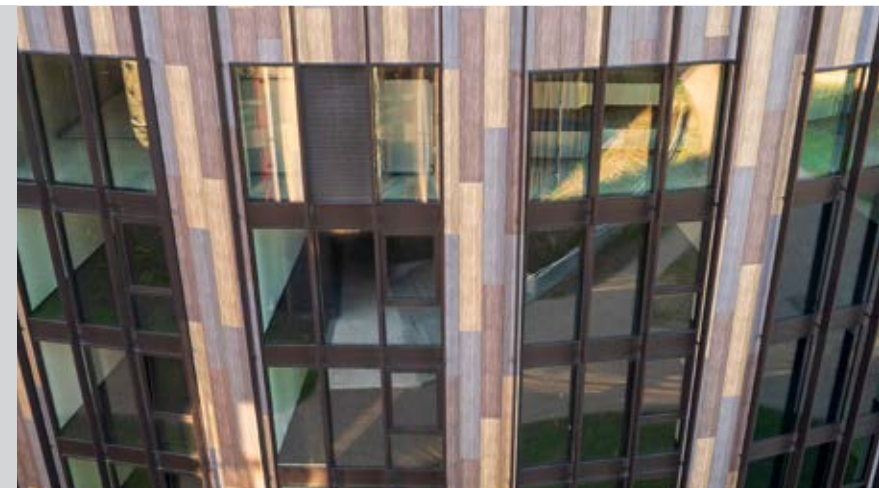




## BASECAMP LYNGBY Denmark

■ By thinking of the school as a city with a central square and small local places, the architects developed a school design in which the majority of the pupils are located close to the heart of the school at all times.

(Product: Rockpanel Woods)





# LEIBNIZ GYMNASIUM

Germany

■ The idea of the new school building was to create an open market place, which can be used as a village square by everyone. Around this central square, the classrooms are located, connecting pupils of all ages.

(Products: Rockpanel Natural and Rockpanel Colours)





## GBS NORDHORN Germany

■ This German vocational school had to be upgraded within the existing footprint. What used to be an old-fashioned, outdated building now looks fresh and modern. The Euroclass A2 boards provide optimum fire safety.

(Product: Rockpanel Woods)

# COLOURS AND SHAPES STIMULATE THE SENSES

Make learning more fun by using different colours and shapes. It will definitely make your building one of a kind! As the boards are easy to handle and can be cut to shape on-site, it's also very easy to create unique facades.



## BETTY GREIF SCHOOL

Germany

■ The design vision for this special needs school was to create a playful, child-friendly facade. The simple, yet smart way in which the facade boards were cut and the use of multiple shades of green create a varied and vivid facade.

(Product: Rockpanel Colours)



## MAASNIEL SCHOOL The Netherlands

■ In this facade design, the symbolism of the tree was used. The architect sees the tree primarily as an assembly point where meetings take place, stories are shared and ideas are exchanged. The sparkling colours and innovative design bring the school to life.

(Products: Rockpanel Brilliant, Rockpanel Colours, and Rockpanel Woods)

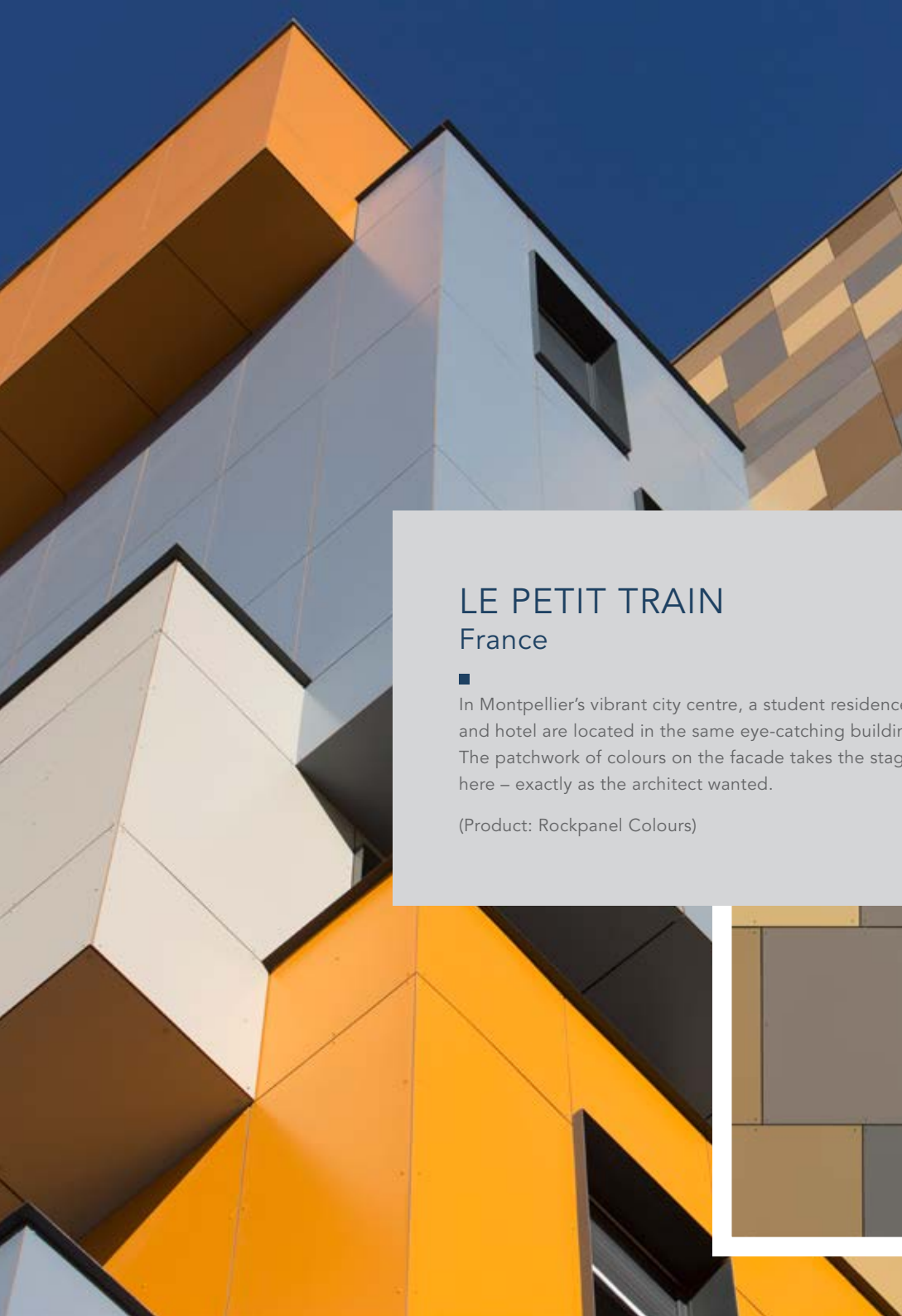




## HUMLAN FORSKOLA Sweden

■ This preschool provides the youngest children a safe and salvaged environment that will stimulate and inspire them to grow. The playful black and yellow facade design was inspired by a bumblebee – discovering the world. The school name 'Humlan' also means 'bumblebee'.

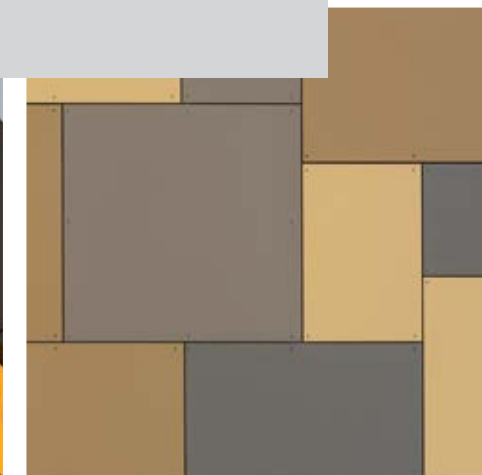
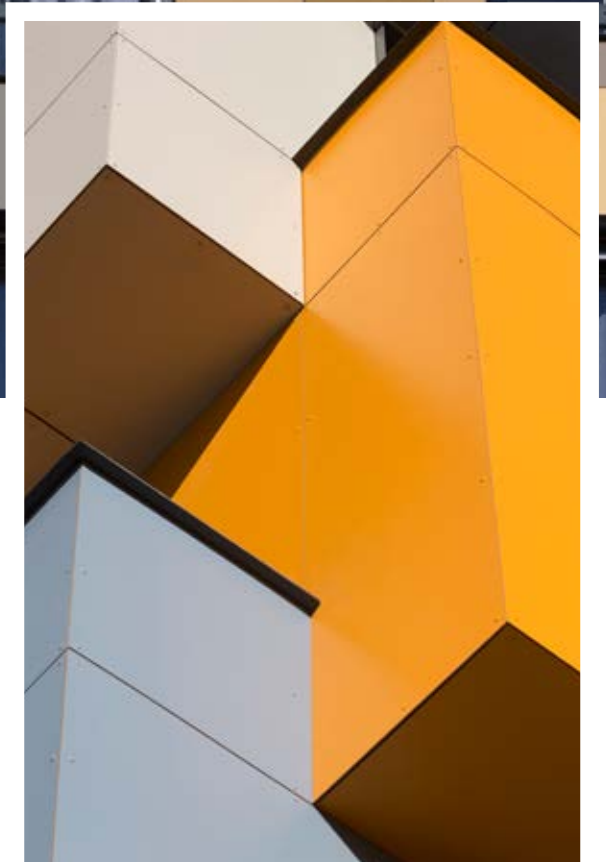
(Products: Rockpanel Lines<sup>2</sup> and Rockpanel Colours)



## LE PETIT TRAIN France

■  
In Montpellier's vibrant city centre, a student residence and hotel are located in the same eye-catching building. The patchwork of colours on the facade takes the stage here – exactly as the architect wanted.

(Product: Rockpanel Colours)



# CREATE DEPTH IN YOUR FACADE

By using a combination of materials and creating depth in your facade, there's always something new to discover when you come closer.

A smart combination of materials will not only create a visually attractive effect, but can also have functional advantages.

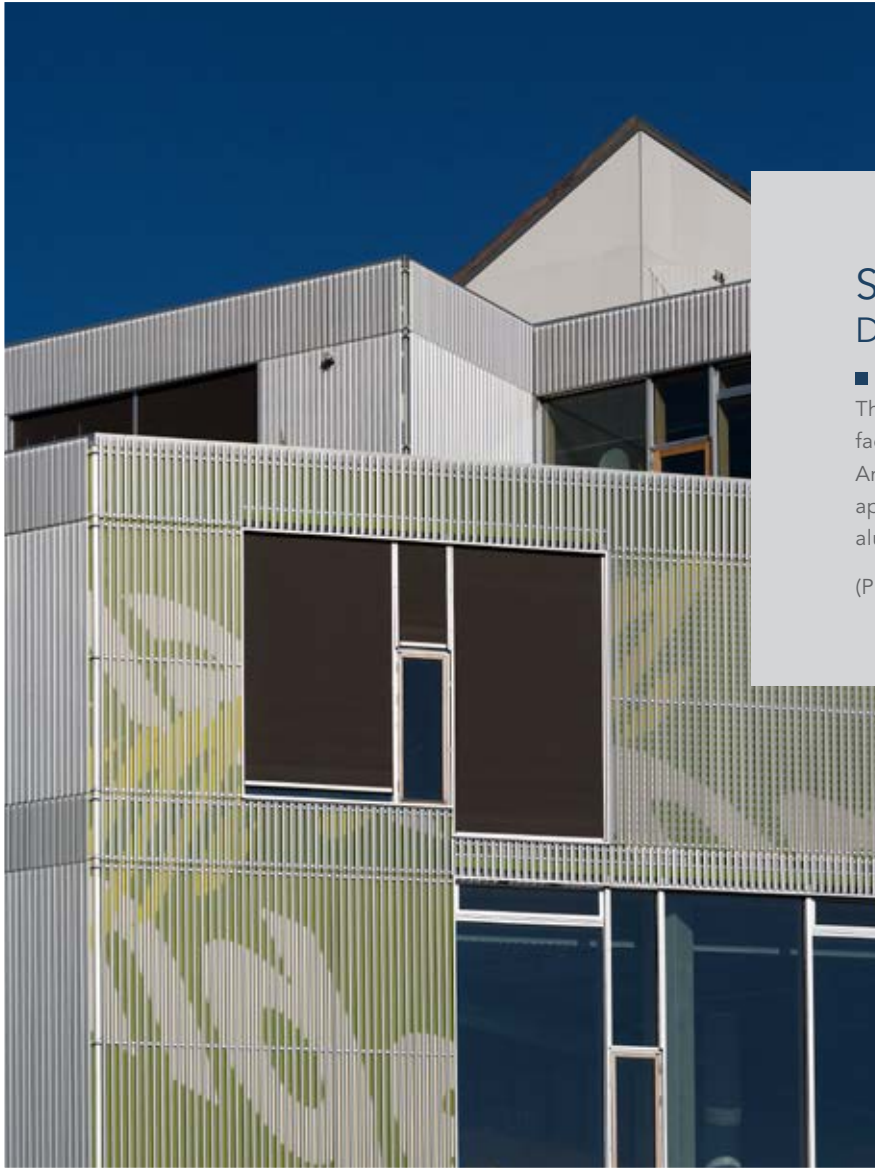




## KLOSTERMARK SCHOOL Denmark

■ By thinking of the school as a city with a central square and small local places, the architects developed a school design in which the majority of the pupils are located close to the heart of the school at all times. This strategy results in a unified school where students have ongoing visual contact with each other and can thus feel the pulse of the school.

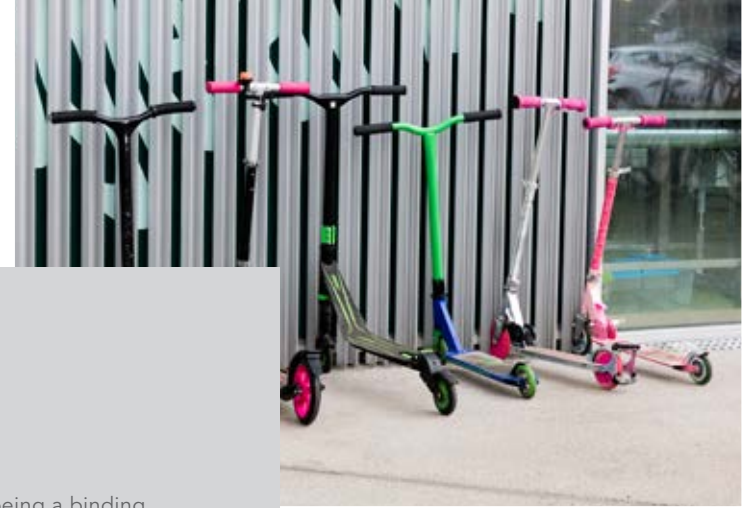
(Product: Rockpanel Colours)



## SYDHAVNEN SCHOOL Denmark

■ The architecture reflects the school's vision of being a binding factor between the city, the harbour and the community. An artwork – based on Hans Christian Andersen's fairy tales – appears on the Rockpanel boards behind slats of recycled aluminium, creating a facade that always offers new perspectives.

(Product: Rockpanel Colours)



## BREDE SCHOOL HUISSEN

The Netherlands

■ Combining aluminium slats with Rockpanel Woods facade boards makes this new-build school visually interesting, with layering and rhythm in the facade. By adding some brick as well, the school now has a cool and sturdy look.

(Product: Rockpanel Woods)





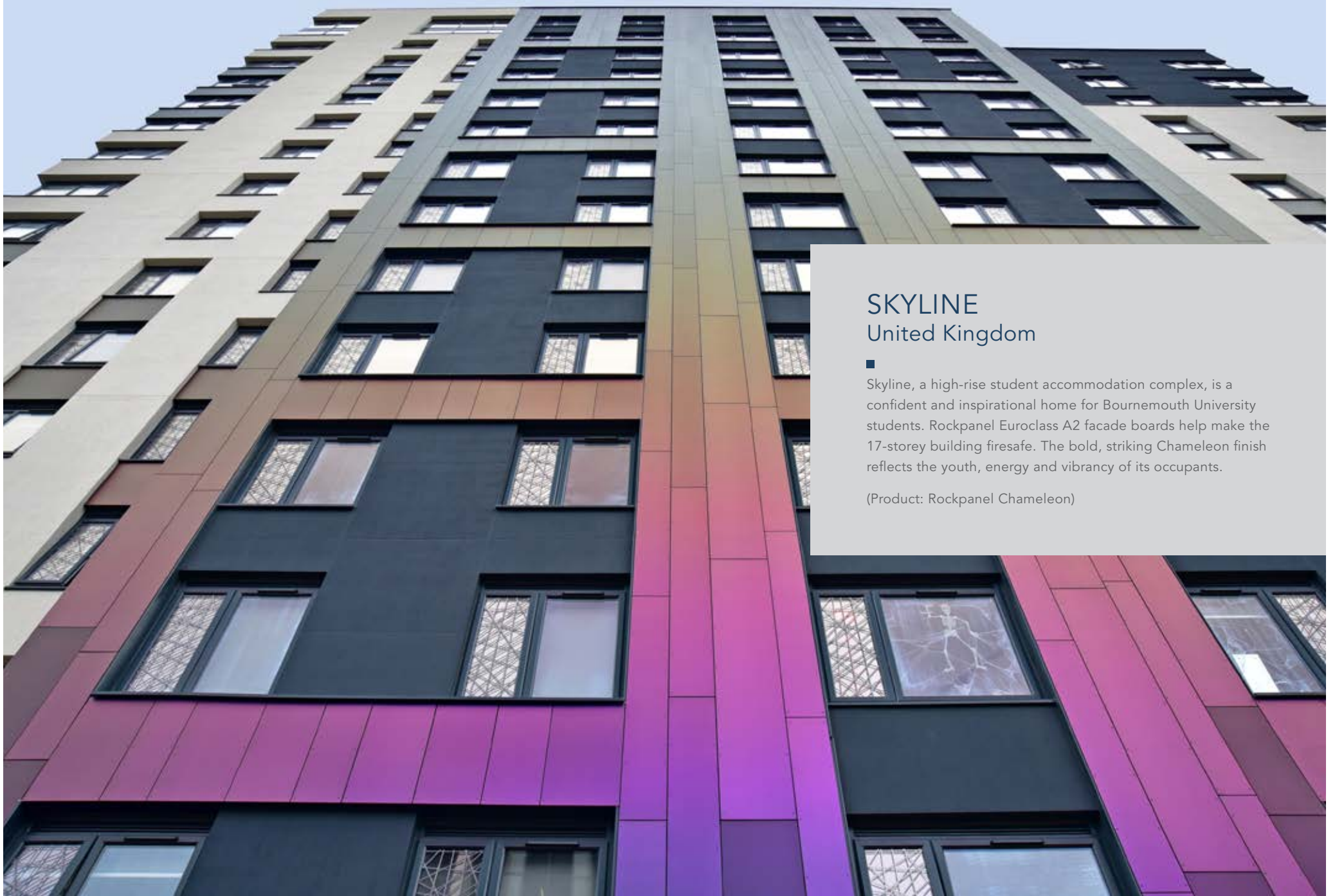
## VESTEGNEN HF & VUC Denmark

■ Located on a corner site, the building harvests natural light as a tool in creating an inviting and dynamic place of education. The facades are made of grey and golden aluminium baguettes against a backdrop of coloured rectangles, which strengthen the depth created by the aluminium baguettes.

(Product: Rockpanel Colours)

# INDUSTRIAL LOOK OR SPARKLING EFFECT

Looking for a facade that provides a little magic? The colour-changing effect of Rockpanel Chameleon will catch everyone's eye. Or go for an industrial, sophisticated look with Rockpanel Metals.



## SKYLINE United Kingdom

■ Skyline, a high-rise student accommodation complex, is a confident and inspirational home for Bournemouth University students. Rockpanel Euroclass A2 facade boards help make the 17-storey building firesafe. The bold, striking Chameleon finish reflects the youth, energy and vibrancy of its occupants.

(Product: Rockpanel Chameleon)



## CHRISTOPHORUS SCHOOL Germany

■ Although the building, finished with Rockpanel Metals and Colours, has a modern appearance, there was still room for tradition. The facades now tell the story of Saint Christopher, after whom the school is named.

(Products: Rockpanel Metals and Rockpanel Colours)

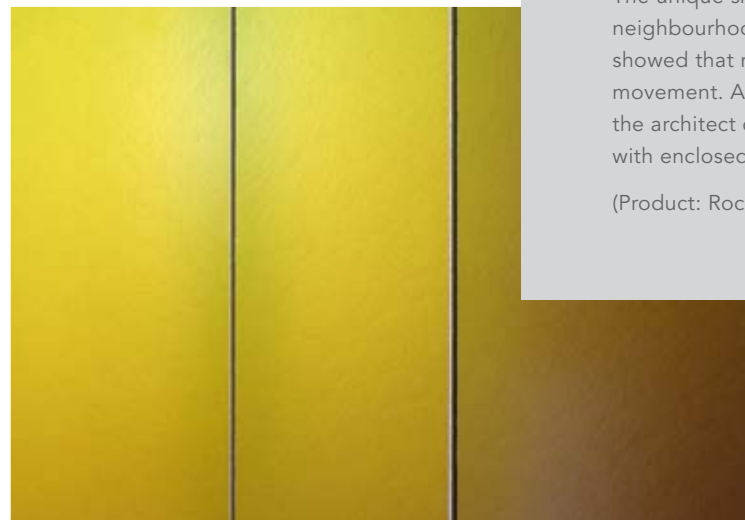




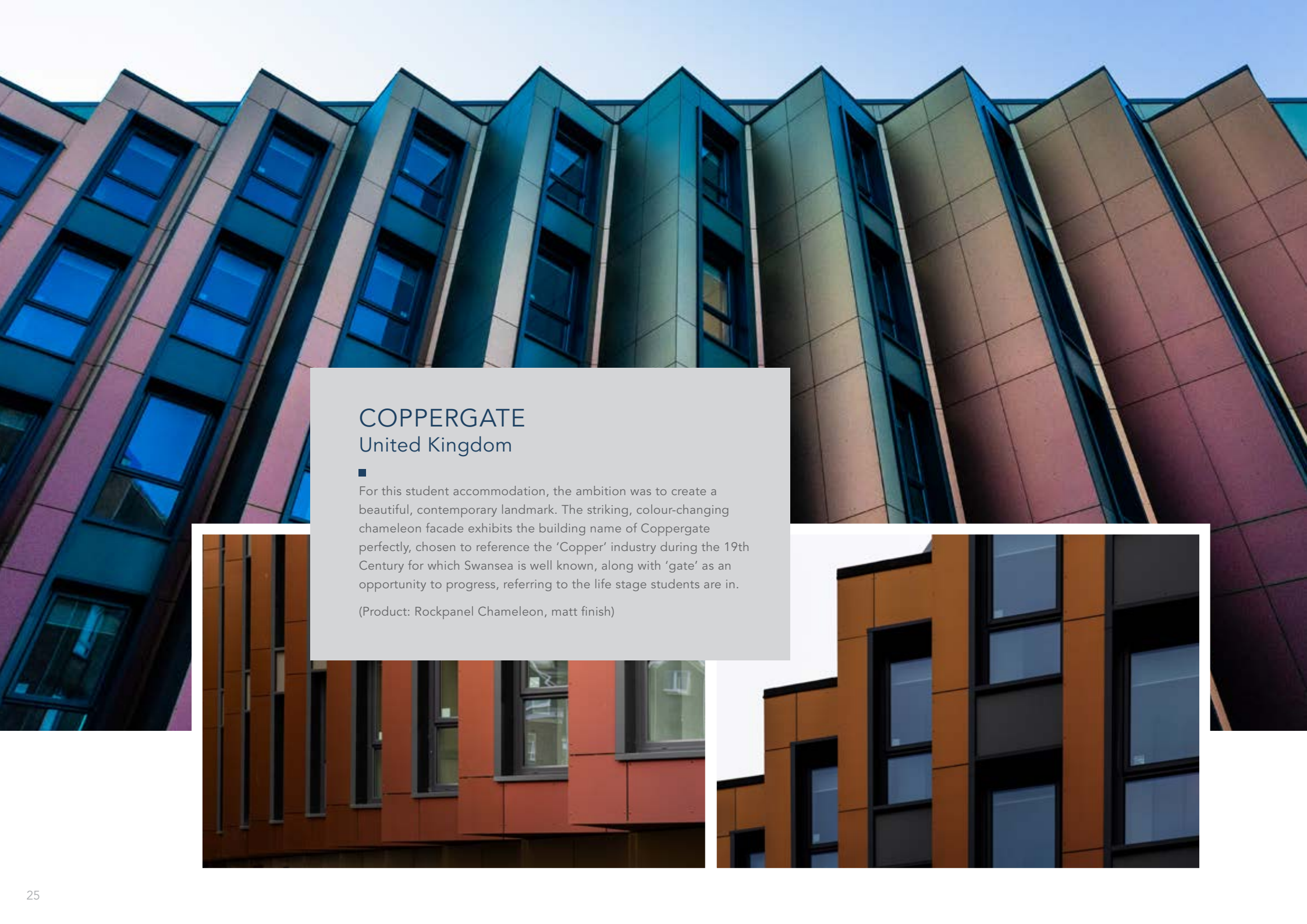
## LES TREFLES Belgium

■ The unique shape of this school was based on the name of the neighbourhood, Les Trèfles (The Clovers), and on studies that showed that round areas elicit up to 20% more spontaneous movement. And as circles have 20% less facade for the same area, the architect chose to break up the standard school structure with enclosed hallway and created extra play space.

(Product: Rockpanel Chameleon)



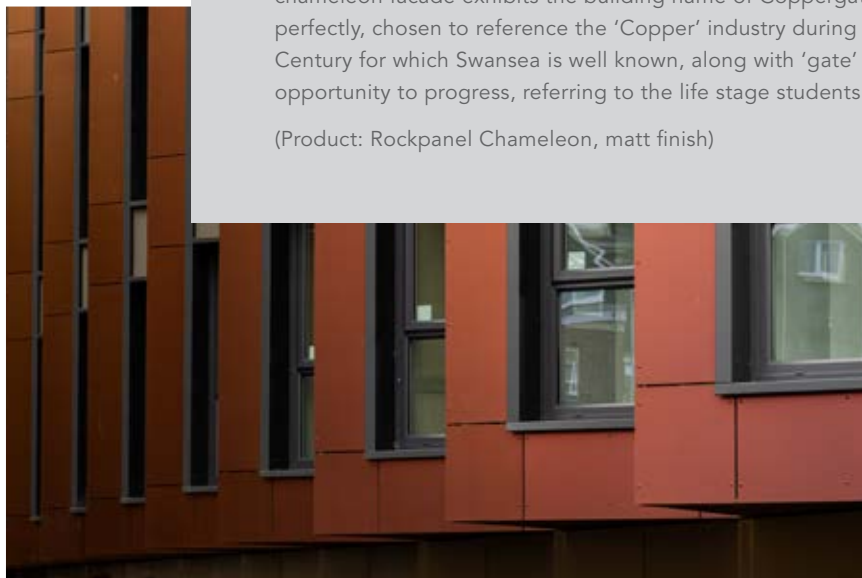




## COPPERGATE United Kingdom

■  
For this student accommodation, the ambition was to create a beautiful, contemporary landmark. The striking, colour-changing chameleon facade exhibits the building name of Coppergate perfectly, chosen to reference the 'Copper' industry during the 19th Century for which Swansea is well known, along with 'gate' as an opportunity to progress, referring to the life stage students are in.

(Product: Rockpanel Chameleon, matt finish)



# LET YOUR FACADE TELL A STORY

As the Rockpanel boards are not affected by moisture, the edges do not need to be treated. The same goes for any perforations or engravings you make, allowing you to tell a story or communicate a message directly on the facade. Create an artwork, use it for signage or tell an entire story.



## KAZAN GYMNASIUM Russia

■  
By routing the upper layer of the facade, the colourful boards underneath become visible. This visually interesting effect perfectly fits with the function of the building.

(Product: Rockpanel Colours)

## LES TREFLES Belgium

■ Routing is a simple, but very elegant way of providing signage around the school building. This helps visitors and (new) pupils to find their way around. And if names or layouts change, you can just replace a single board.

(Product: Rockpanel Chameleon)





## MIDMILL SCHOOL United Kingdom

■ Natural and cultural themes have formed the inspiration for an impressive new school within the rural surroundings. Rockpanel boards in warm and vibrant shades of orange, yellow and green with subtly contrasting patterns, create a lively, contemporary aesthetic.

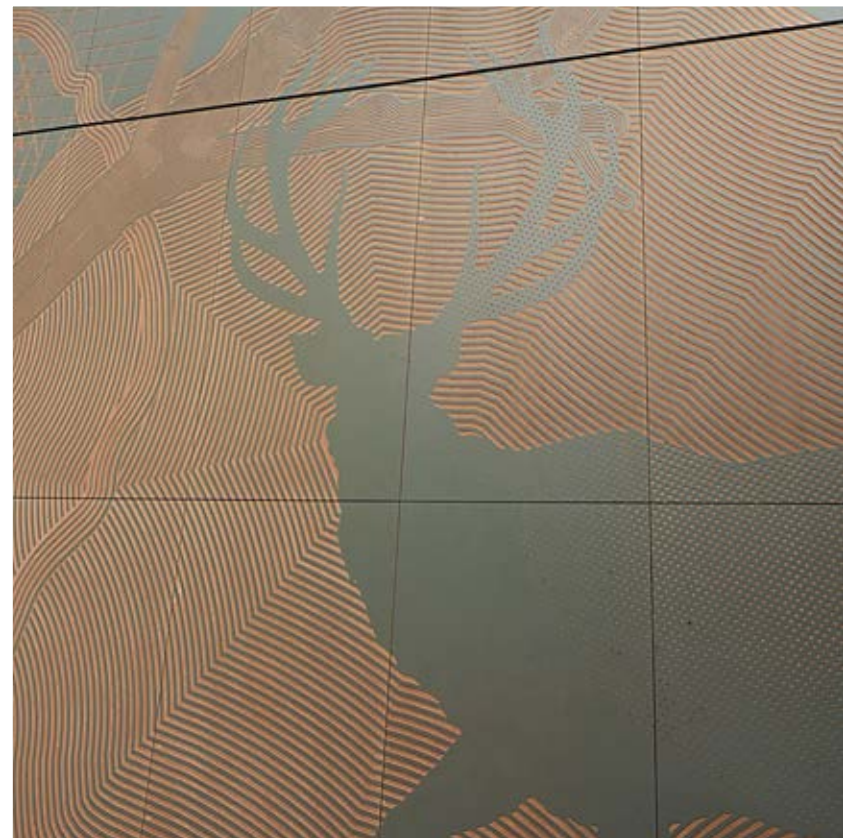
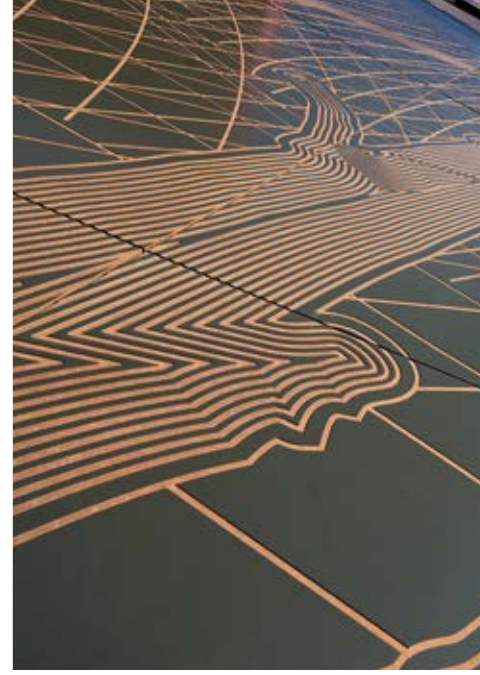
(Product: Rockpanel Colours)



## SHEFFIELD HALLAM UNIVERSITY United Kingdom

■ The artwork is conveyed through dynamic mark making and linear drawing, routed into the Rockpanel surface. It is inspired by the rich history of cutlery and silverware manufacture in the city of Sheffield, where the university campus is located.

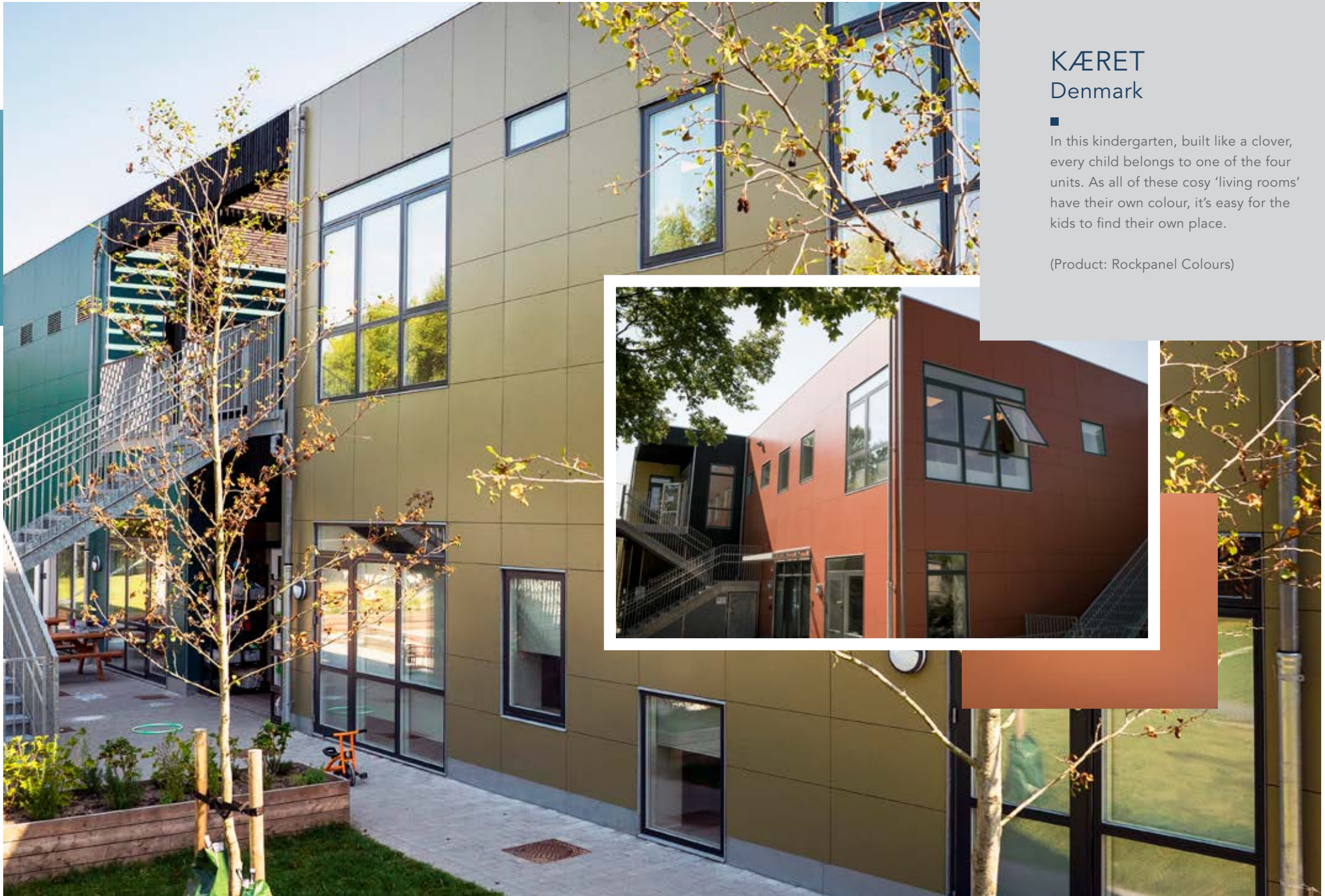
(Product: Rockpanel Colours)



# FLEXIBILITY FOR PREFAB MODULAR BUILDINGS

Many schools are created as prefabricated modules – and many are there only as a temporary solution, or as additions to existing schools. Still, there's no need to compromise on the facade design here!

Go for a classical design that combines well with almost all types of architecture, or go for a colourful design with a personal touch.



## KÆRET Denmark

■ In this kindergarten, built like a clover, every child belongs to one of the four units. As all of these cosy 'living rooms' have their own colour, it's easy for the kids to find their own place.

(Product: Rockpanel Colours)



## MARIEDALSSKOLAN Sweden

■  
When reconstructing this school with modular buildings, many advantages of this flexible approach were discovered. Bright red facade boards to give the buildings a colourful and attractive look.

(Product: Rockpanel Colours)





## EKENS SKOLA Sweden

■ Ekens School, in the middle of Hammerby Sjöstad, is a fantastic example of a school for 450 students was created as a three-storey building. The school modules were installed in just three weeks and the interior was finalized in four months.

(Product: Rockpanel Structures)



# MISSION GROVE PRIMARY SCHOOL United Kingdom

■ With prefab buildings, you can be as creative as you like to be! The addition of some colourful accents to the Rockpanel Woods panels make this primary school look cheerful and warm.

(Products: Rockpanel Woods and Rockpanel Colours)

**Rockpanel  
Product  
Assortment**

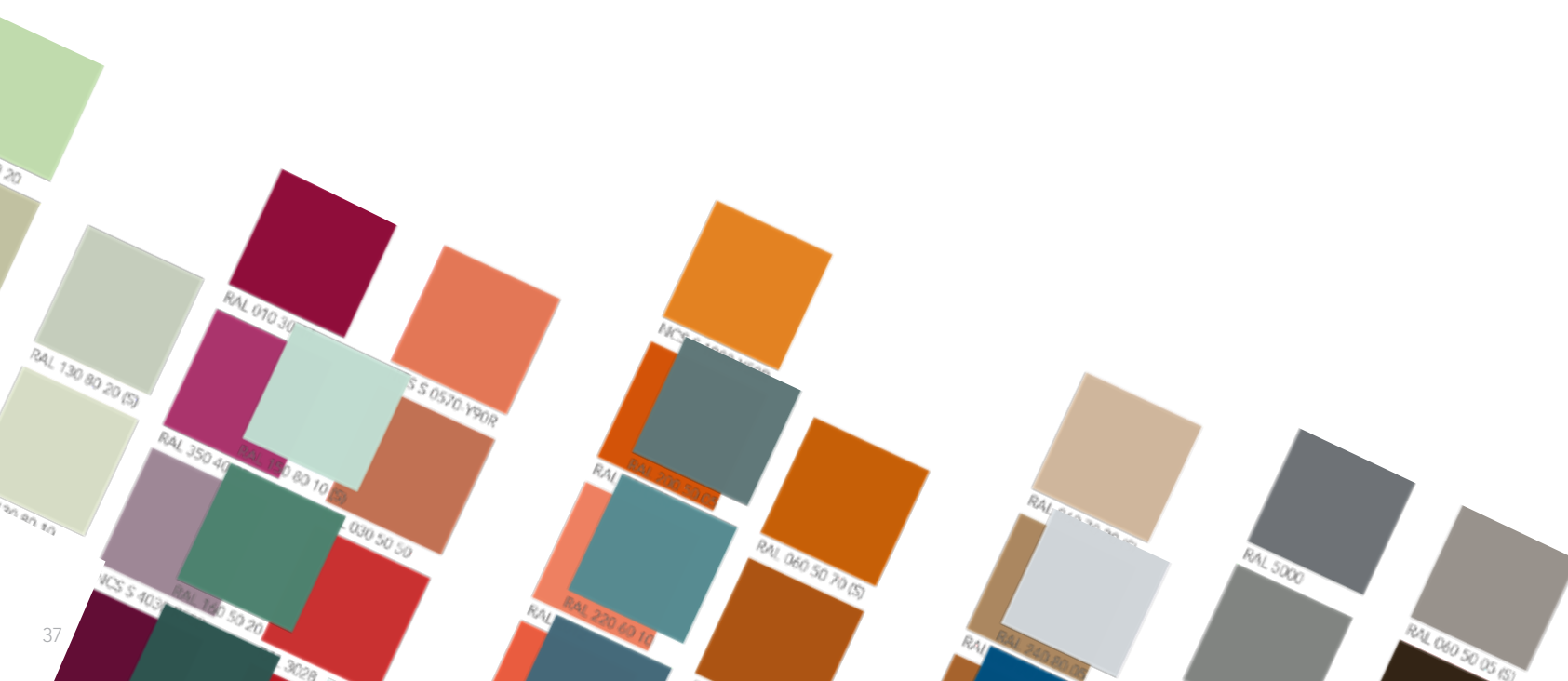


# Rockpanel Colours

Fascinating colour range.

Let your facade blend into the environment. Or emphasise the features in an urban setting. Enjoy complete freedom in the design of your building – in almost any colour of your choice. Our Rockpanel Colours assortment consists of Standard and Special colours.

In addition to our standard and special RAL/NCS colours, you can choose almost any Custom RAL/NCS colour if you want to create something even more unique. Visit our website for the minimum order quantity and delivery times of Rockpanel Colours Standard, Special and Custom. For a colourfast decorative statement, Rockpanel Colours is the perfect choice.



# Rockpanel Metals

Make your metals vision rock!

Rockpanel Metals sleek surfaces with an industrial look. Modern architecture is often characterised by an industrial design look. Give your high-quality facades an elegant finish. Rockpanel Metals creates amazing effects on facades because of the sheen from the light striking it – even with timelessly modern residential buildings. Discover the Elemental Metals line or choose an Advanced Metals design for an exceptional industrial finish that lasts for decades.



White Aluminium



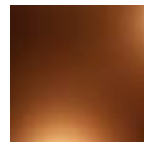
Grey Aluminium



Steel



Gunmetal



Copper



Platinum



Yellow Gold



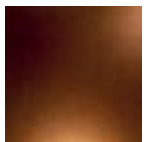
Classic Gold



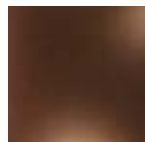
Silver



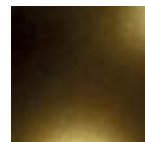
Verdigris



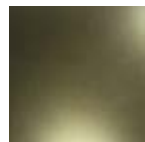
Dark Copper



Bronze



Electrum



Brass



Titanium



Ultramarine

All Rockpanel Metals designs except for Elemental Grey Aluminium and Elemental White Aluminium are considered to be directional. Colour variation may occur if panel directionality is not observed.

# Rockpanel Chameleon

Fascinatingly different from every angle.

Fascinatingly different from every angle. Transform your building into an eye-catching feature that is constantly changing, but always striking and inspiring. Just change your position around the facade. The colour will never be the same no matter how long you look at the building.

Depending on the angle from which it is viewed and the effect of the sunlight, the surface of the Rockpanel Chameleon facade changes. The secret of this vibrant colour is a special crystal effect layer. The effect remains permanently protected for many years.



Light purple – Light brown



Purple – Green – Blue



Red – Gold – Purple

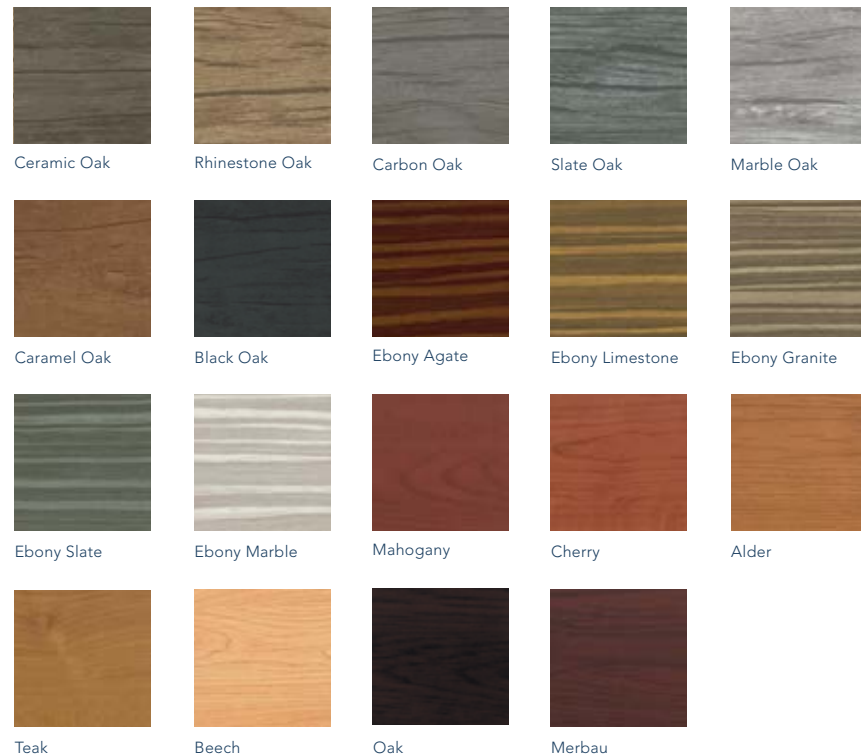


Green – Brown

# Rockpanel Woods

Alive like wood. Sturdy as stone.

Amaze everyone and make the users of your building feel good. With facades that radiate the warm, organic glow of wood. Build with the freedom and stability your modern architecture requires. Rockpanel Woods gives your building a natural wood look. And at the same time the durability, stability and fire protection of a stone facade.



# Rockpanel Natural

In dialogue with the elements.

The true beauty of a facade is sometimes quite puristic. Be brave – let the sun, wind and rain play their part. Without applying paint or surface sealer, Uncoated Rockpanel Natural allows the elements to take an active role in your facade. Your building fits organically into its surroundings, in an interactive way from day one.

Rockpanel Natural boards have no coating and they will change under the influence of the local climate. As with other natural materials such as wood, concrete and steel, light from the sun ensures natural weathering and colouring over time.



# Rockpanel Stones

Stones reach the sky.

Visionary architecture is characterised by a courageous crossing of borders. Overcome limits – even those in nature. Design facades with the powerful look of stone.

Build with its strength. But remain flexible in terms of shape and dimension. Challenge gravity – with the ease of Rockpanel Stones.



Mineral Chalk



Mineral Silver



Mineral Graphite



Mineral Clay



Mineral Rust



Basalt Zinc



Basalt Iron



Basalt Anthracite



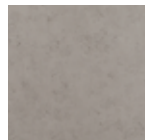
Mineral Earth



Mineral Lime



Concrete Platinum



Concrete Ash



Concrete Sand

# Rockpanel Lines<sup>2</sup>

Planks – when lines are required.

Play around with traditional façade designs – use lines as a continuous element or to provide a stylish touch. With Rockpanel Lines<sup>2</sup> planks you can take the liberty to reinterpret the classic tongue and groove profile. Versatile, durable, easy to maintain and cost-effective.

Rockpanel Lines<sup>2</sup> will give every facade a nice and clean look. It's also ideal for smaller facade parts on your building or for roof applications. For a playful effect, you can combine the two widths (S and XL).



RAL 9010



RAL 9001



RAL 7004



RAL 1015



RAL 7016



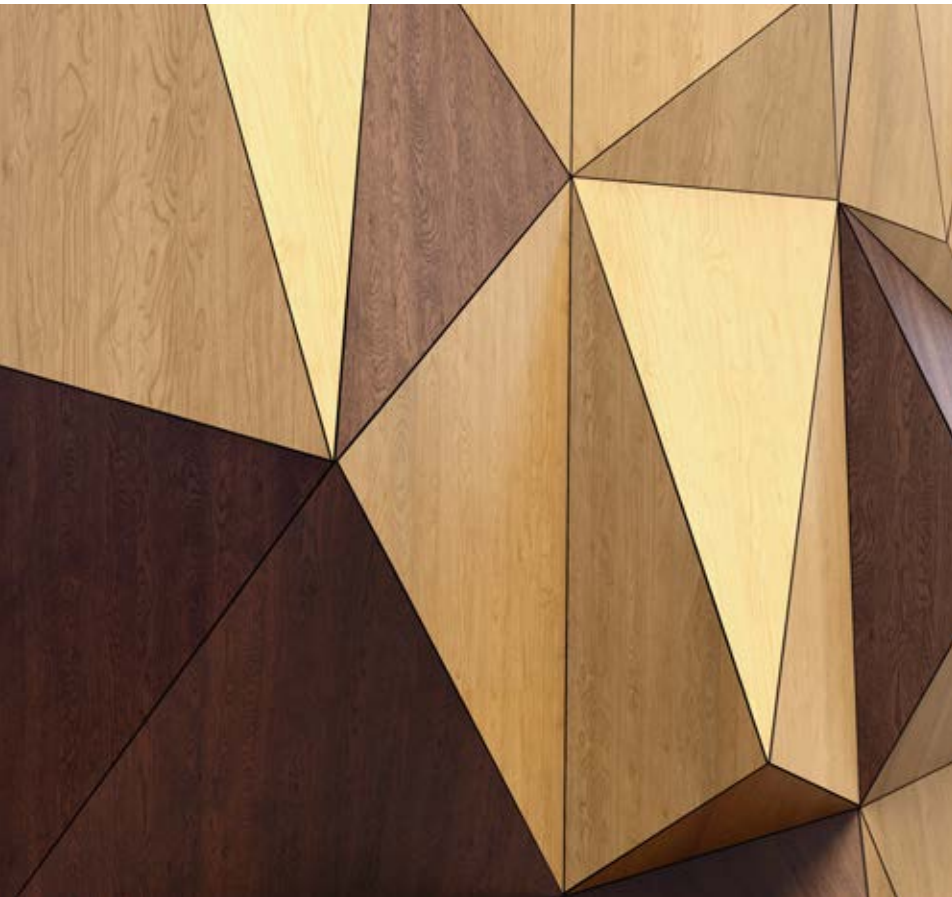
Grey  
(Ready-to-paint  
primer)



# Rockpanel Premium

Customised facade solutions.

If you don't want to compromise on the design and detail of your project, Rockpanel Premium facades are the right choice for you. Rockpanel Premium combines all the advantages of Rockpanel facade panels and also offers a number of choices outside of the norm.



## CUSTOM DESIGNS

Combine all of our colours, designs and finishes, anyway you want it.



## PROTECTPLUS COMES STANDARD

Highly effective against dirt and graffiti.



## MATT, SEMI-GLOSS, HIGH-GLOSS

Play with the light – choose between three different gloss grades.



## CUSTOMISED FORMATS AND DIMENSIONS

Think outside the box with customised colours and designs, and customised formats and dimensions.



## CONCEALED FIXING

No visible rivets or screws – just your flawless facade design.



## FIRE SAFE

With Rockpanel Premium, you will always meet high fire protection requirements, since the facade panels are classified as A2-s1,d0 according to EN 13501-1.

# Install the facade with whatever you wish.

Screws, rivets, nails, adhesive or invisible fixing – you are free to choose.

Rockpanel boards can be mounted in many different ways. Screws or rivets are used in visible mechanical mounting. These can be matched to the colour of the facade or deliberately in contrast. A more subtle, less obvious variant are nails, which are barely visible.

Invisible fixing is also an option: with our Tack-S adhesive system or with EasyFix clips for fast and permanent weatherboarding. Last but not least, we offer a concealed fixing system.

This allows you to easily create a flawless facade with invisible mechanical fixing.

Screw fixed to timber



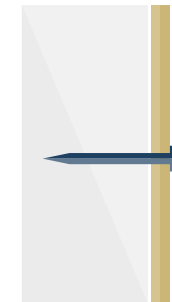
Screw

Rivet fixed to aluminium



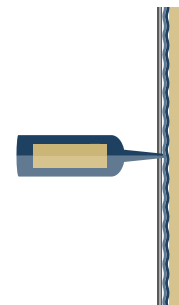
Rivets

Nail fixed to timber



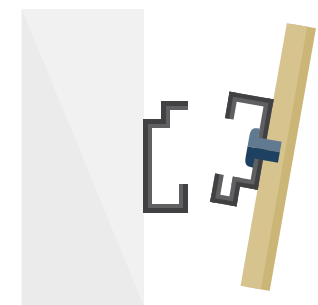
Nails

Adhesive system



Adhesive method

Concealed fixing



Concealed fixing

# Rockpanel is part of the ROCKWOOL family

All members of the ROCKWOOL Group have a common goal: release the natural power of stone to enrich modern living. When creating the perfect learning environment, energy efficiency and acoustics are very relevant factors too.

Our family members use the power of stone wool to offer suitable solutions in these areas.

## Creating an energy-efficient school?

ROCKWOOL insulation provides a range of products to help make your building firesafe, energy-efficient and comfortable. The insulation products help conserve scarce energy resources and thereby helps alleviate severe environmental problems. Moreover, the unique thermal properties of stone wool have improved the indoor climate of many learning environments.

## Looking to optimize the inside learning environment?

Designing a school is a complicated and demanding architectural challenge. Building materials for the interior of schools need to provide acoustic comfort, be easy to maintain, flexible, adaptable and robust.

Rockfon acoustic solutions reduce noise levels in classrooms, sports halls, swimming pools and canteens so that students can hear, concentrate, learn, relax and play.

## The other members of the ROCKWOOL family

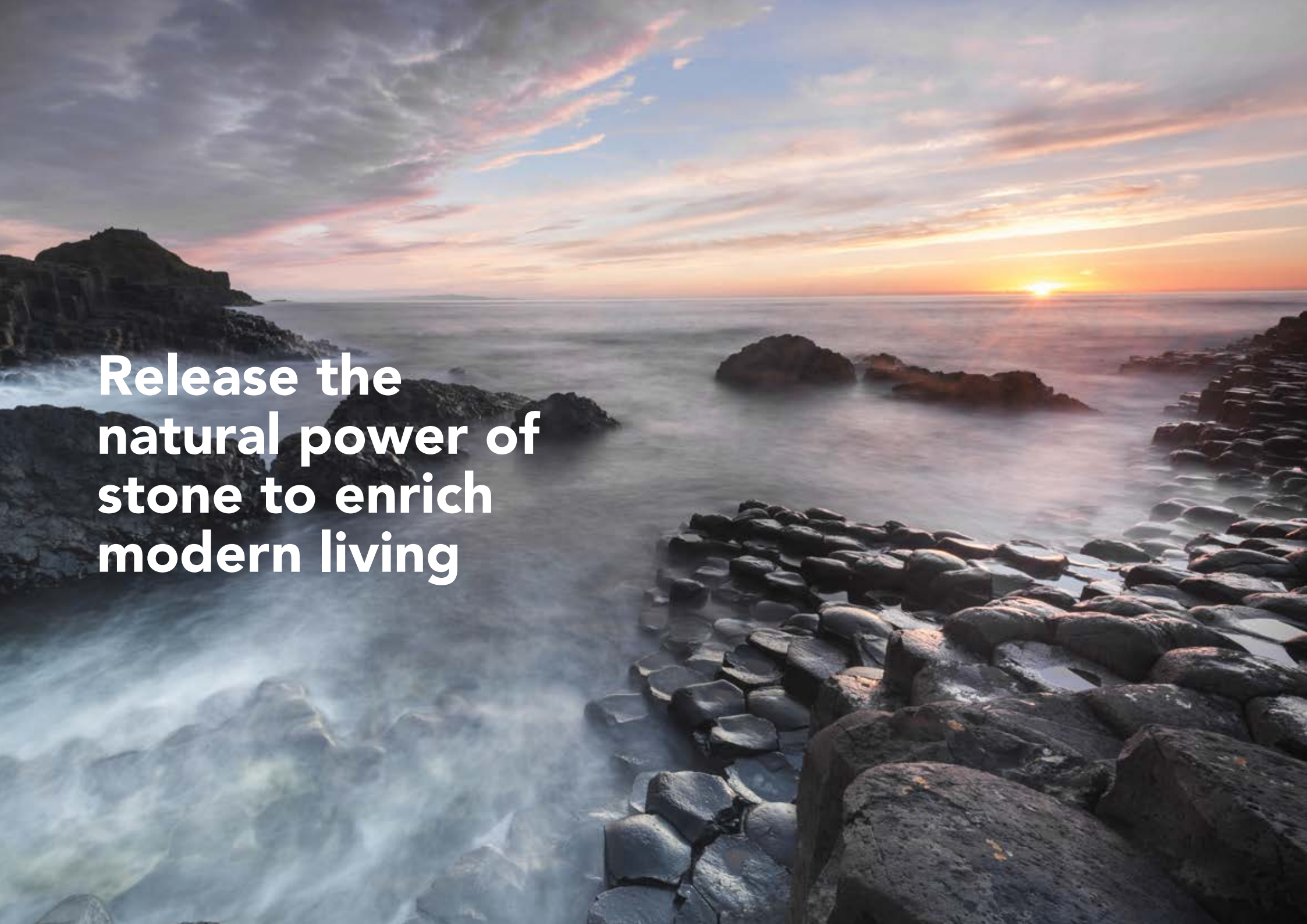
LAPINUS supplies innovative stone wool solutions and actively helps their customers meet rapidly changing global challenges in various markets, including automotive and water management.

GRODAN's precision growing products increase the amount you can grow, improve the quality of what you grow, and limit your operating risks.

## Our common goal:

Release the natural power of stone to enrich modern living.





**Release the  
natural power of  
stone to enrich  
modern living**



## BUILDING INSPIRATIONS

[www.rockpanel.co.uk](http://www.rockpanel.co.uk)

Learn more about us, ask for product samples and be inspired by attractive reference projects.



[www.facebook.com/rockpanel](https://www.facebook.com/rockpanel)

Be the first to discover our latest international projects.



[www.twitter.com/rockpanel](https://www.twitter.com/rockpanel)

Follow us for the latest news and updates.



Engage and interact.



[www.instagram.com/rockpanel](https://www.instagram.com/rockpanel)

Get inspired.